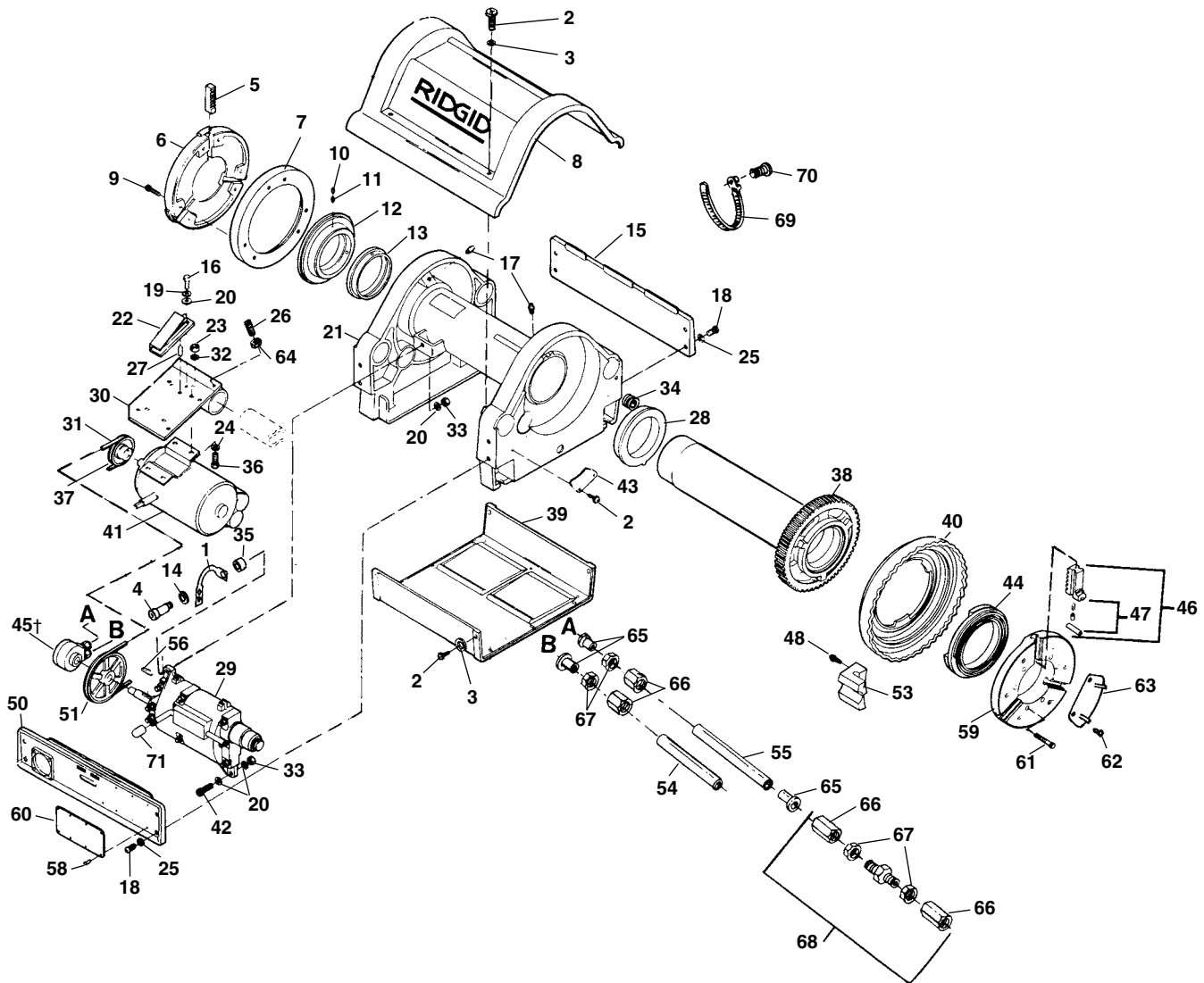


Main Drive Components

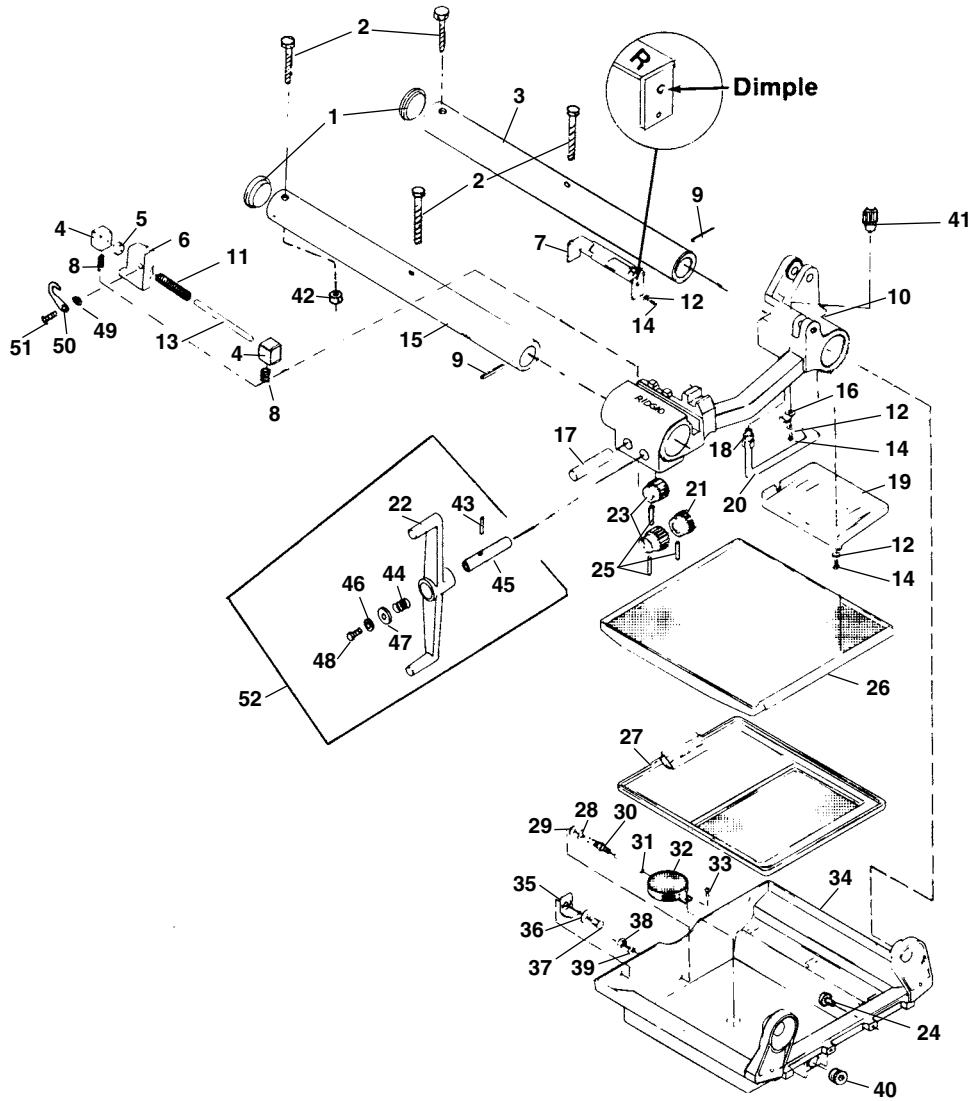


**NOTE: Order parts by Catalog Number only.
DO NOT order by Reference Number.**

| Ref. No. | Catalog No. | Description | Ref. No. | Catalog No. | Description | Ref. No. | Catalog No. | Description |
|----------|-------------|---------------------------------|----------|-------------|-----------------------------------|----------|-------------|------------------------------------|
| 1 | 33622 | Pump Bracket | 25 | 40930 | Lock Washer 3/8" (8) | 45† | 27307 | Oil Pump |
| 2 | 41597 | Screw (12) | 26 | 88265 | Set Screw 3/8" - 16 x 1" | 46 | 40087 | Chuck Jaw Set |
| 3 | 41592 | Washer (10) | 27 | 88230 | Roll Pin 1/4" x 3/16" | 47 | 26242 | Jaw Insert Set |
| 4 | 33627 | Screw | 28 | 26767 | Front Bearing | 47 | 26247 | Jaw Insert Set F/Coated Pipe |
| 5 | 32412 | Centering Jaw Set | 29 | 26362 | Gear Box Assy. | 48 | 27067 | Self-Tapping Screw (2 Req. f/G.S.) |
| 6 | 26537 | Centering Head | 30 | 27062 | Motor Bracket | 50 | 59722 | Front Side Plate |
| 7 | 26542 | Back Plate | 31 | 26832 | V-Belt | 51 | 26852 | Gear Box Pulley |
| 8 | 26477 | Top Cover | 32 | 40770 | Lock Washer 5/16" (4) | 53 | 26507 | Pinch Point Boss (2 Req. f/G.S.) |
| 9 | 40910 | Screw 1/4" - 20 x 3/4" (6) | 33 | 27517 | Lock Nut 3/16" - 18 | 54 | 27007 | Inlet Hose |
| 10 | 45300 | Set Screw 3/16" - 24 x 1/4" (3) | 34 | 47080 | Grommet | 55 | 26822 | Output Hose |
| 11 | 45265 | Set Screw 3/16" - 24 x 1/2" (3) | 35 | 33617 | Spacer | 56 | 27002 | Key |
| 12 | 32407 | Scroll | 36 | 85910 | Bolt 3/16" - 18 x 1 1/4" | 58 | 85920 | Rivets (8) |
| 13 | 26352 | Rear Bearing | 37 | 26857 | Motor Pulley (60 Hz) | 59 | 26332 | Chuck Cap |
| 14 | 26307 | Washer | 38 | 27082 | Motor Pulley (50 Hz) | 60 | 88690 | Safety Plate |
| 15 | 26487 | Rear Side Plate | 39 | 26347 | Drive Gear/Spindle Assy. | 61 | 26522 | Screw 3/16" - 24 x 2 1/4" (6) |
| 16 | 32145 | Screw 1/4" - 20 x 1/2" | 40 | 26337 | Handwheel | 62 | 27242 | Screw 10 - 32 (6) |
| 17 | 46860 | Grease Fitting (2) | 41 | 26237 | Motor w/Capacitor 120V, 60 Hz | 63 | 33612 | Set of 3 Cover Plates |
| 18 | 26997 | Screw 3/8" - 16 x 3/4" (8) | 41 | 27287 | Motor w/Capacitor 110V, 50 Hz | 64 | 83545 | Jam Nut 3/8" - 16 |
| 19 | 44740 | Lock Washer 1/4" | 41 | 26232 | Motor w/Capacitor 240V, 60 Hz | 65 | 35117 | Tube Insert (3) |
| 20 | 96740 | Washer 3/16" | 41 | 27282 | Motor w/Capacitor 220/240V, 50 Hz | 66 | 40602 | Compression Nut |
| 21 | 26357 | Base | 41 | 28052 | Motor w/Capacitor 220V, 50 Hz GS | 67 | 40607 | Ferrule |
| 22 | 26492 | Belt Tensioner | 42 | 27037 | Shoulder Bolt | 68 | 26972 | Union |
| 23 | 96730 | Nut 3/16" - 18 (4) | 43 | 27012 | Pinion Guard | 69 | 43552 | Tie Down Strap |
| 24 | 27402 | Washer 5/16" (4) | 44 | 26517 | Scroll | 70 | 45275 | Screw 10 - 24 x 1/2" |
| | | | | | | 71 | 27032 | Shifter Knob |

†See Service Notes

Carriage and Chip Pan



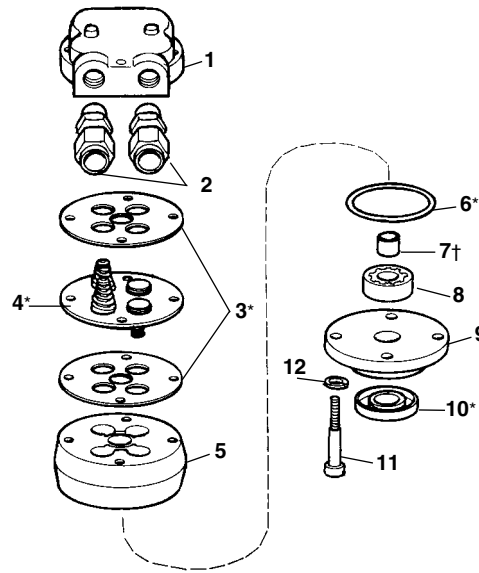
**NOTE: Order parts by Catalog Number only.
DO NOT order by Reference Number.**

| Ref. No. | Catalog No. | Description | Ref. No. | Catalog No. | Description | Ref. No. | Catalog No. | Description |
|----------|-------------|--|----------|-------------|----------------------------|----------|-------------|---------------------------------|
| — | 49992 | Carriage Assembly (Includes Ref. #4-8, 10-14, 17, 21, 23, 25, 41, 49-52) | 17 | 26777 | Sine Bar/Pinion Shaft (2) | 36 | 40930 | Lock Washer 3/8" (2) |
| 1 | 26502 | Rail Plug (2) | 18 | 26562 | Supply Line Fitting | 37 | 26997 | Screw 3/8" - 16 x 3/4" (2) |
| 2 | 40167 | Bolt 5/16" - 18 x 3 1/2" (4) | 19 | 26772 | Drip Plate | 38 | 83545 | Hex Nut 3/8" - 16 |
| 3 | 49982 | Rear Rail | 20 | 26812 | Die Lubrication Tube | 39 | 26307 | Washer |
| 4 | 26787 | Guide Block (2) | 21 | 26587 | Sine Bar Pinion | 40 | 48337 | Drain Plug |
| 5 | 26792 | Sine Bar Spacer | 22 | 40147 | Carriage Handwheel | 26842 | 26842 | Drain Plug (Rubber-Early Style) |
| 6 | 40242 | Sine Bar | 23 | 26572 | Carriage Pinion (2) | 41 | 28462 | Ball Detente |
| 7 | 26912 | Sine Bar Cover Assembly | 24 | 26837 | Stud (2) | 42 | 27517 | Lock Nut 5/16" - 18 (4) |
| 8 | 26582 | Guide Block Spring (2) | 25 | 74965 | Roll Pin 1/4" x 1 1/4" (3) | 43 | 74965 | Pin |
| 9 | 27052 | Roll Pin (2) | 26 | 26802 | Draw Tray Assembly | 44 | 89530 | Spring |
| 10 | 49987 | Carriage (Includes Ref. #41) | 27 | 26807 | Insert Assembly | 45 | 40157 | Handwheel Shaft |
| 11 | 26592 | Sine Bar Return Spring | 28 | 27252 | Washer | 46 | 41582 | Lock Washer |
| 12 | 41592 | Washer #10 (2) | 29 | 41715 | Seal Washer | 47 | 40152 | Washer |
| 13 | 26577 | Guide Bar | 30 | 26697 | Bulk Head Fitting | 48 | 26997 | Screw |
| 14 | 79965 | Screw #10 - 32 x 1/2" (5) | 31 | 26927 | Tubing | 49 | 40227 | Spring Washer |
| 15 | 49977 | Front Rail | 32 | 27262 | Screen Assembly | 50 | 40237 | Latch |
| 16 | 26652 | Oil Supply Clamp | 33 | 26797 | Screw #10 - 32 x 5/16" | 51 | 49472 | Spiral Pin |
| | | | 34 | 26847 | Chip Pan Hanger Assembly | 52 | 42027 | Handwheel Kit |
| | | | 35 | 26817 | Chip Pan Bracket (2) | | | |

“ML” Oil Pump

**NOTE: Order parts by Catalog Number only.
DO NOT order by Reference Number.**

| Ref. No. | Catalog No. | Description |
|----------|-------------|-----------------------------------|
| —† | 27307 | “ML” Oil Pump |
| 1 | 33442 | Pump Valve Body |
| 2 | 33432 | Compression Fitting (2) |
| 3* | 33457 | Gasket (Set of 2) |
| 4* | 33452 | Valve Retainer Assy. |
| 5 | 33482 | Gerotor Housing w/Bearing |
| 6* | 33477 | O-Ring |
| 7† | 33462 | Sleeve Bearing |
| 8 | 33467 | Gerotor Set |
| 9 | 33447 | Pump Cap w/Seal |
| 10* | 33472 | Oil Seal |
| 11 | 44510 | Soc. Hd. Cap Screw 1/4" - 20 x 2" |
| 12 | 45150 | Lock Washer 1/4" |
| * | 33422 | “ML” Service Kit |



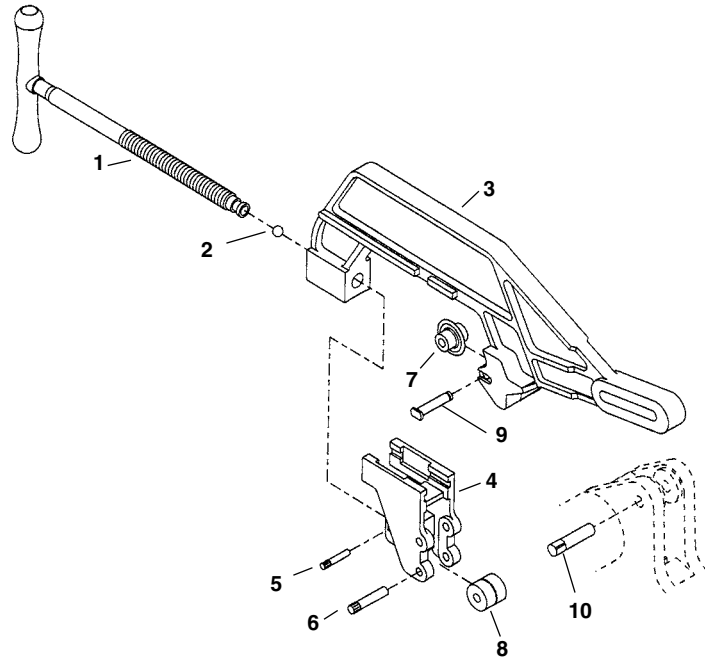
Note: Ref. 7 Sleeve Bearing used on older Gerotor Housings, not required on new pumps.

* Indicates Part is Included in Service Kit.

† See Service Note

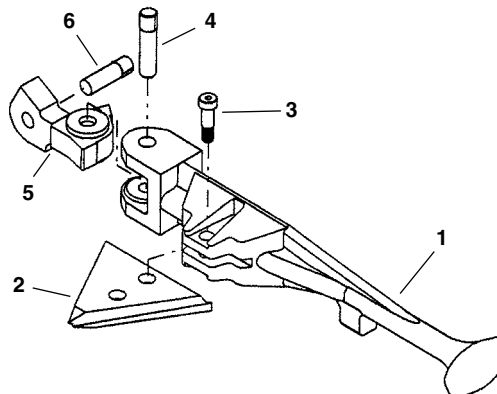
No. 764 Pipe Cutter

| Ref. No. | Catalog No. | Description |
|----------|-------------|--------------------------------|
| — | 26212 | 764 Pipe Cutter |
| 1 | 26752 | Screw Handle |
| 2 | 41730 | Ball Bearing |
| 3 | 26742 | Cutter Frame |
| 4 | 26747 | Roll Housing |
| 5 | 26757 | Groove Pin |
| 6 | 26762 | Groove Pin (2) |
| 7 | 33125 | Cutter Wheel |
| 8 | 34785 | Roll (2) |
| | 26252 | Roll F/Coated Pipe (2 per set) |
| 9 | 34790 | Wheel Pin |
| 10 | 27072 | Groove Pin |

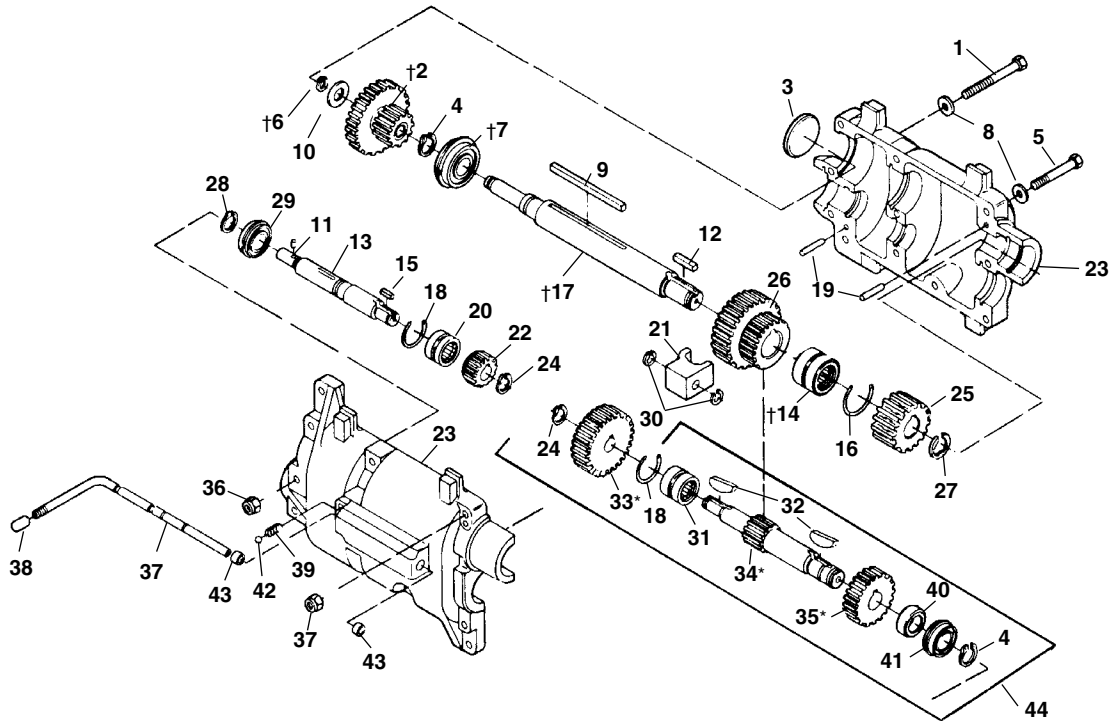


No. 744 Reamer Assembly

| Ref. No. | Catalog No. | Description |
|----------|-------------|------------------------|
| — | 26217 | 744 Reamer Assembly |
| 1 | 26602 | Reamer Arm |
| 2 | 34577 | Reamer Blade 1/4" - 4" |
| 3 | 27037 | Shoulder Bolt |
| 4 | 27072 | Groove Pin |
| 5 | 26607 | Pivot Block |
| 6 | 26727 | Groove Pin (2) |



Gear Box



**NOTE: Order parts by Catalog Number only.
DO NOT order by Reference Number.**

| Ref. No. | Catalog No. | Description | Ref. No. | Catalog No. | Description | Ref. No. | Catalog No. | Description |
|----------|-------------|-------------------------------|----------|-------------|---------------------|----------|-------------|------------------------------|
| — | 26362 | Gear Box Assembly | 16 | 26922 | Wire Ring | 32 | 33982 | Woodruff Key (2) |
| 1 | 27102 | Screw 5/16" - 18 x 3 1/4" (2) | †17 | 26382 | Output Shaft | 33* | 33992 | 1st Gear Constant Speed |
| †2 | 26702 | Fixed Gear Cluster Assembly | 18 | 26917 | Wire Ring (2) | 34* | 33987 | Constant Speed Shaft |
| 3 | 26667 | Freeze Plug | 19 | 26662 | Dowel Pin (2) | †35* | 33997 | Large Constant Speed Gear |
| 4 | 26412 | Snap Ring (2) | 20 | 26367 | Front Input Bearing | 36 | 75110 | Stop Nut 5/16" - 18 (11) |
| 5 | 27107 | Screw 5/16" - 18 x 2 1/2" (9) | 21 | 26437 | Shifting Fork | 37 | 26442 | Shift Slide |
| †6 | 27117 | Snap Ring | 22 | 26377 | 1st Input Gear | 38 | 27032 | Shifter Knob |
| †7 | 26417 | Rear Output Bearing | 23 | 26647 | Gear Box | 39 | 26692 | Shifter Detente Spring |
| 8 | 96740 | Washer 5/16" (11) | 24 | 26677 | Snap Ring | 40 | 26452 | Spacer |
| 9 | 26552 | Shift Cluster Key | †25 | 26432 | Output Pinion Gear | 41 | 26407 | Front Constant Speed Bearing |
| 10 | 26672 | Thrust Washer | 26 | 26422 | Cluster Shift Gear | 42 | 46925 | Steel Ball |
| 11 | 26907 | Spiral Pin | 27 | 26557 | Snap Ring | 43 | 26447 | Shift Slide Sleeve Bearing |
| 12 | 26457 | Output Pinion Key | 28 | 44430 | Retaining Ring | | 26707 | Grease (1 lb. can) |
| 13 | 26902 | Input Shaft Assembly | †29 | 26372 | Input Rear Bearing | 44 | 28047 | Constant Speed Assembly |
| †14 | 26427 | Front Output Bearing | 30 | 34245 | Rings Set of 5 | | | |
| 15 | 26657 | Input Pinion Key | 31 | 26397 | Rear Bearing | | | |

†See Service Notes

*When replacing early style parts, using square keys, a complete shaft assembly (Ref. No. 44) should be used.

