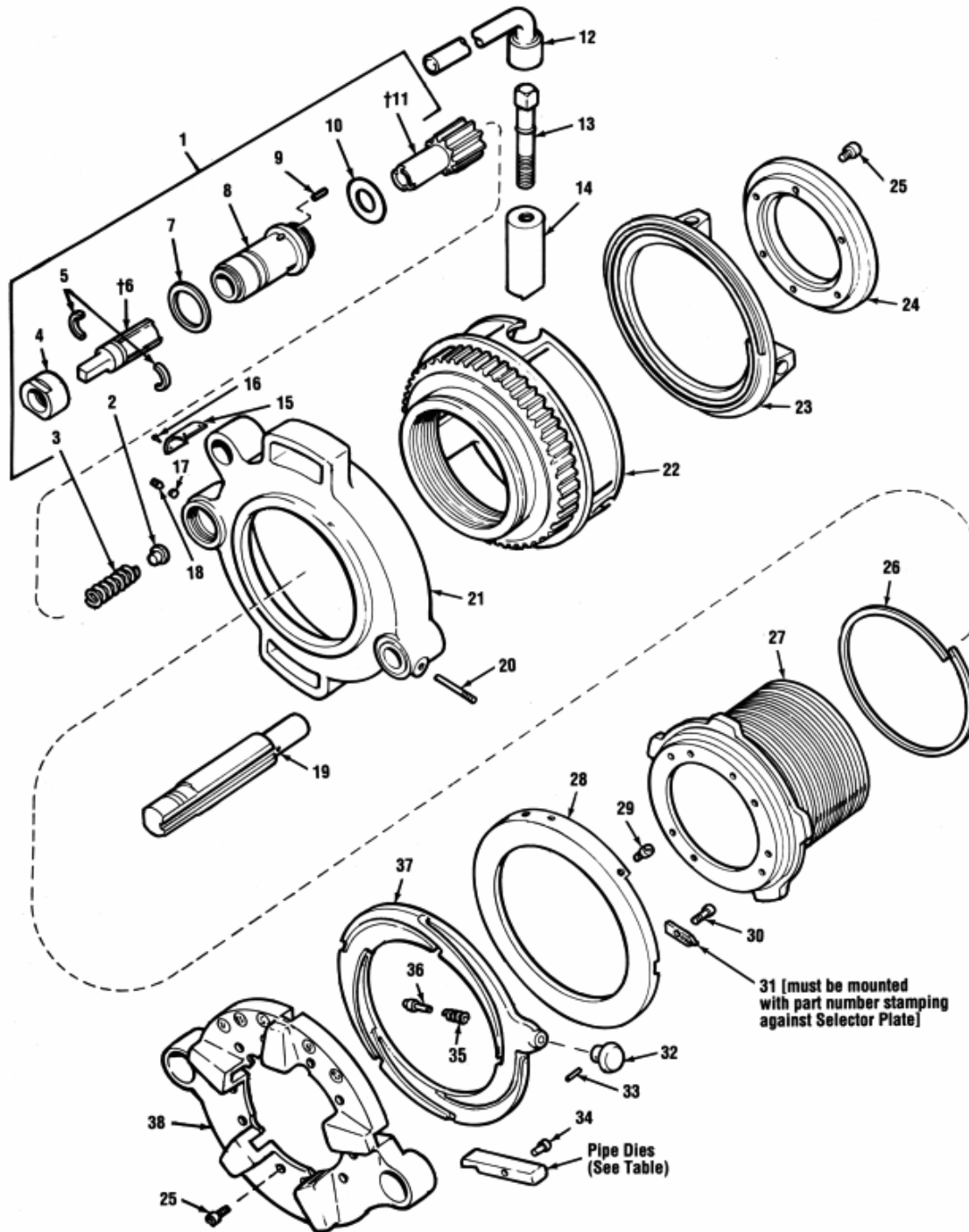


141 - Cabeçote Engrenado



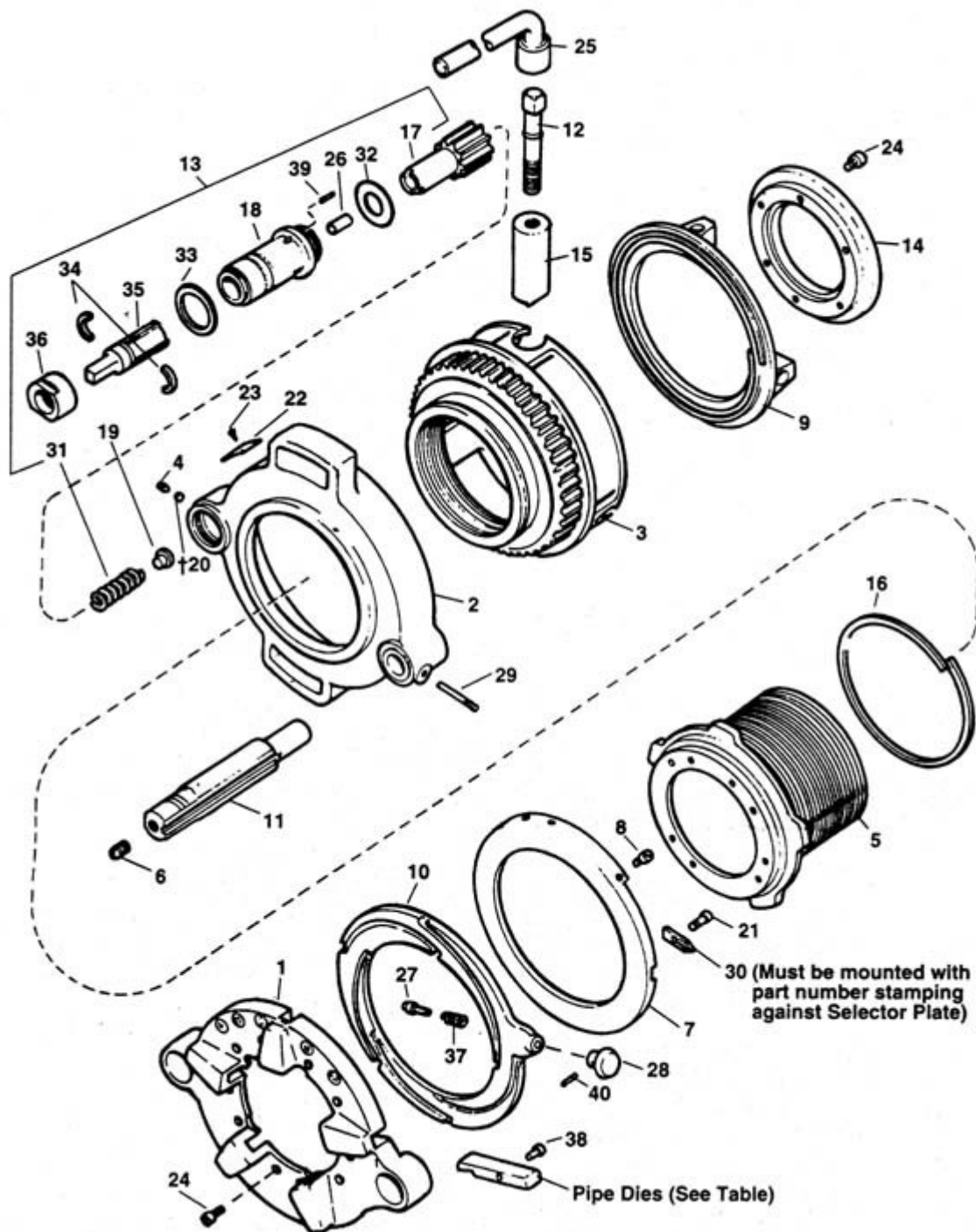
NOTA: USE SEMPRE O NÚMERO DE CATÁLOGO AO FAZER SEUS PEDIDOS.

Núm. Ref.	Núm. Cat.	Descrição	Núm. Ref.	Núm. Cat.	Descrição
1	39360	Pinion Shaft Assembly	21	39200	Gear Case
2	39810	Wear Plug	22	39195	NPT Workholder
3	39815	Spring		68040	BSPT Workholder
4	39605	Pinion Shaft Retaining Collar	23	39100	Workholder Scroll
5	39695	Split Ring	24	39455	Retaining Ring
6	39465	Drive Shaft	25	32275	Screw (I6)
7	39615	Pressure Ring	26	39730	Gear Case Spring Ring
8	39825	Pinion Sleeve	27	39320	NPT Threaded Barrel
9	39620	Pressure Pin (3)		68090	BSPT Threaded Barrel

10	39625	Pinion Shaft Ring	28	39185	NPT Selector Plate
+11	39470	Pinion Shaft with Gear		39190	BSPT Selector Plate
12	39585	Wrench		39110	Selector Plate f/Cast Iron
	29056	Wrench (Europe Hex-Key)	29	39790	Stop Screw
13	39795	Clamp Screw with Clip	30	39830	Guide Block Screw
	29046	Clamp Screw with Clip (Europe)	31	39655	Guide Block
14	39345	Workholder Jaw (3)	32	39645	Knob (2)
15	39835	Name Plate	33	44925	Pin (2)
16	46870	Drive Screw (4)	34	39750	Die Pins & Clips
+17	32755	Nylon Plug	35	39690	Spring (2)
18	58720	Set Screw	36	39640	Locating Pin (2)
19	39330	NPT Guide Post	37	39180	Cam Plate
	68020	BSPT Guide Post	38	39175	Head
20	39650	Guide Post Screw			

Services Notes: (Ref No. 6) (Ref. No. 11) Early Models incorporating 39600/E-1936 Pinion Shaft and 3590/E-1935 Drive with 39630/E-1945-1 Centering Pin can be updated by using new style Pinion or new style Drive Shaft and discarding Centering Pin.
 (Ref. No. 17) Nylon Plug should be replaced anytime Pinion Shaft Assembly (Ref. No. 1) is removed from Gear Case.

161 - Cabeçote Engrenado



NOTA: USE SEMPRE O NÚMERO DE CATÁLOGO AO FAZER SEUS PEDIDOS.

Núm. Ref.	Número Catálogo	Descrição	Núm. Ref.	Número Catálogo	Descrição
1	39085	Head	19	39810	Wear Plug
2	39090	Gear Case	+20	32755	Nylon Plug
3	39095	Workholder (NPT)	21	39830	Guide Block Screw
	67990	Workholder (BSPT)	22	39840	Name Plate
4	58720	Set Screw	23	46870	Drive Screw (4)
5	39160	Threaded Berrel (NPT)	24	32270	Screw (I6)
	68010	Threaded Barrel (BSPT)	25	39585	Wrench
6	39780	Set Screw		29056	Wrench (Europe - Hex Key)
7	39165	Selector Plate (NPT)	26	39630	Center Pin
	68015	Selector Plate (BSPT)	27	39640	Locating Pin (2)
	39115	Selector Plate (Cast Iron)	28	39645	Knob (2)
8	39790	Stop Screw	29	39650	Screw
9	39105	Workholder Scroll	30	39655	Guide Block
10	39310	Cam Plate	31	39660	Spring
11	39315	Guide Post (NPT)	32	39665	Pinion Shaft Ring
	68080	Guide Post (BSPT)	33	39670	Pressure Ring
12	39795	Clamp Screw with Clip	34	39675	Split Ring
	29046	Clamp Screw w/Clip (Europe hex socket)	35	39680	Drive Shaft

13	39325	Pinion Shaft Assembly	36	39685	Retaining Collar
14	39350	Retaining Plate	37	39690	Spring (2)
15	39355	Workholder Jaw (3 per set)	38	39700	Die Pin and Clip (Set of 5)
16	39430	Gear Case Spring Ring	39	39705	Pressure Pin (3)
17	39365	Pinion Shaft with Gear	40	44925	Pin (2)
18	39435	Pinion Sleeve			

+ Service Note: Nylon Plug (Ref. No. 21) should be replaced any time pinion shaft assembly (Ref. No. 13) is removed from gear case