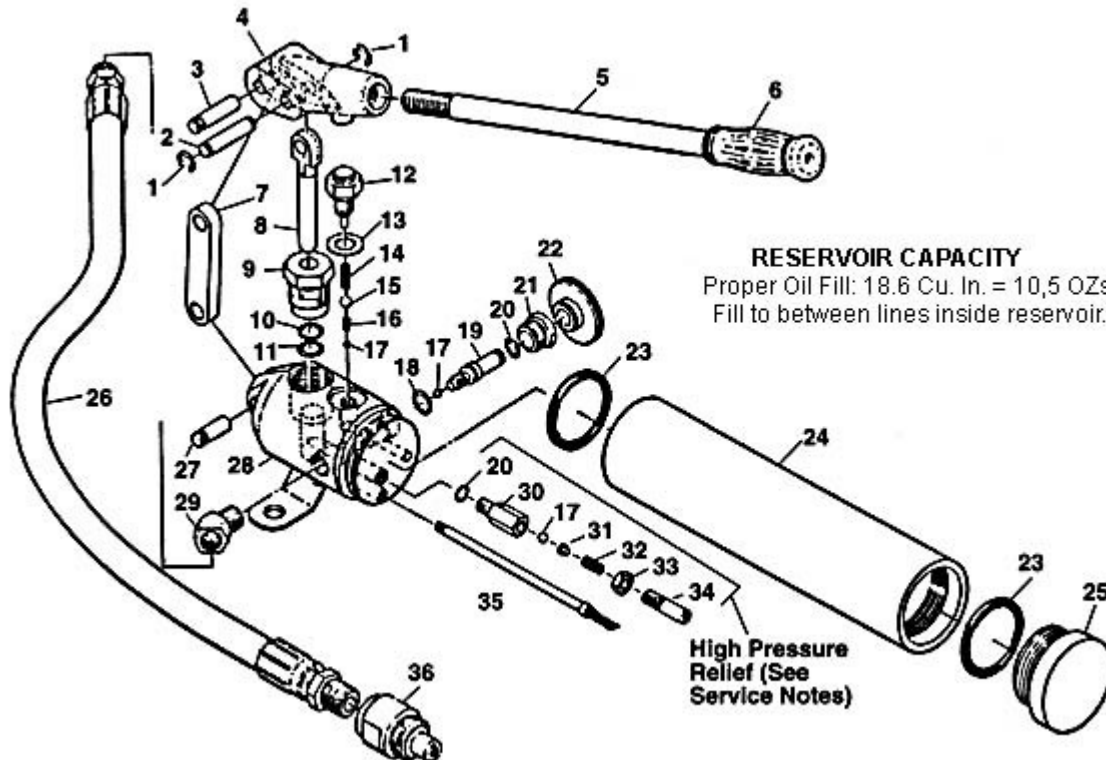


Single-Stage, Two-Way Valve



NOTA: USE SEMPRE O NÚMERO DE CATÁLOGO AO FAZER SEUS PEDIDOS.

Núm. Ref.	Núm. Cat.	Descrição	Núm. Ref.	Núm. Cat.	Descrição
--	24542	H-18 Hand Pump	20	24157*	O-Ring (2)
1	24497*	Snap Ring (6)	21	24167	Valve Guide
2	24492	Pin	22	24172	Knob
3	24202	Pin	23	24507	O-Ring (2)
4	24222	Handle Head	24	24232	Reservoir
5	24502	Handle	25	24237	Reservoir Cap
6	24272	Hand Grip	26	21847	Hydraulic Hose, 3 ft
7	24487	Lever Crank	27	24207	Pin
8	24127	Piston	28	24122	Pump Body
9	24132	Packing Nu	29	24217	Elbow, 45 Deg. 3/8" NPTF
10	24137*	Back-up Ring	30	24247	Valve Body
11	24142*	O-Ring	31	24252	Ball Guide
12	24177*	Spring Stop Bolt	32	24257	Spring
13	24147*	Copper Washer	33	24262	Jam Nut
14	24182*	Spring	34	24267	Adjusting Plug
15	24187*	Steel Ball (6 mm)	35	24197	Intake Tube w/Filter
16	24192*	Spring	36	24107	Hose Half Coupler
17	24152*	Steel Ball (3) (4.8 mm)			Following items not shown:
18	24227*	Copper Washer		26032*	Decal, Trade Name
19	24162	Valve Stem		26067	Repair Kit (includes * items)

Items marked with and asterisk (*) are included in the Repair Kit.

+See Service Notes

Services Notes for H-18

HIGH PRESSURE RELIEF VALVE SETTING

The High Pressure Relief Valve on this pump is factory preset at 9,400 to 10,500 PSI. The setting can be checked or reset as follow:

A - Attach a 15,000 PSI gauge to outlet port of pump.

B - Operate pump cautiously to build pressure while watching gauge.

C - If maximum pressure exceeds 10,500 PSI:

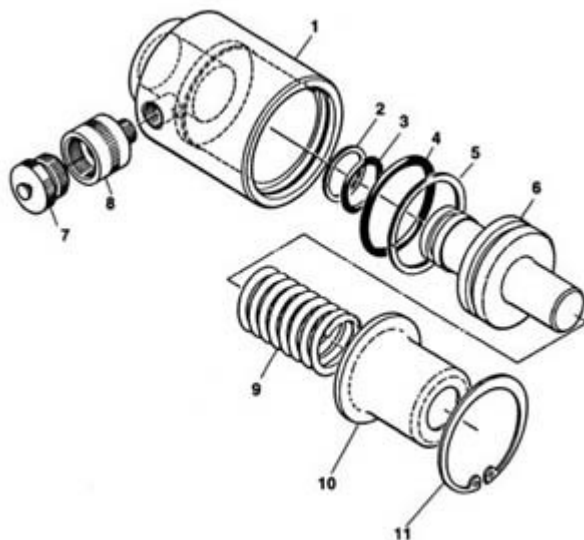
- 1 - Stop Pumping and open release valve.
- 2 - Turn adjusting plug, Ref. 34, counterclockwise 1/2 turn and retest.

D - If maximum pressure is less than 9,400:

- 1 - Turn adjusting plug clockwise 1/8 turn and retest.

E - Continue Step "C" or "D" until specified range is achieved. Lock in place with jam nut. ref. 33

Knockout Ram



NOTA: USE SEMPRE O NÚMERO DE CATÁLOGO AO FAZER SEUS PEDIDOS.

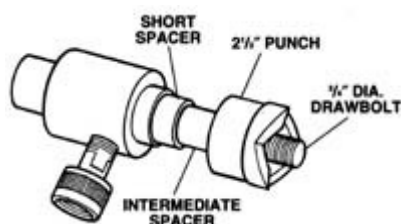
Núm. Ref.	Núm. Cat.	Descrição
--	24537	8R111S Ram
1	24442	Cylinder Body
2	24482*	Back-up Ring
3	24477*	O-Ring
4	24467*	O-Ring
5	24472*	Back-up Ring
6	24452	Piston
7	24117	Dust Cap. Ram Half
8	24112	Ram Half Coupler. 3/8" NPTF
9	24462	Spring
10	24457	End Cap
11	24447	Snap Ring

Following Items not shown

	26042*	Decal, Trade Name
	26077	Repair Kit (Includes * items)

Items marked with an asterisk (*) are included in the Repair Kit.

Services Notes for H-18



REF. 11 RAM DISASSEMBLY

Spring tension holds End Cap (Ref. 10) firmly against Snap Ring(Ref. 11). To disassemble, apply pressure

against End Cap with hand or arbor press to relieve tension against Snap Ring. Remove Snap and allow Spring to expand slowly.

RAM TEST PROCEDURE

This ram can be tested by using the available kit parts as shown i illustration To achieve maximum hydraulic pressure, block piston and rod travel with the following parts.

NOTE: Do not botton out piston in cylinder with full stroke at maximum PSI.

- 1 - 3/4" **Draw Bolt**, Catralog No. 17597 - Thread bolt into piston rod hand tight.
- 2 - **Short Spacer** (7/8" long), Catalog No. 17642 - Place short spacer on draw bolt.
- 3 - Intermediate Spacer (1 3/16" long), Catalog 17637 - Place intermediate spacer on draw bolt.
- 4 - 2 1/2" K.O. Punch, Catalog No. 17527 - Thread punch backwards on draw bolt hand tight.
- 5 - To check for piston seal leakage at start of stroke, apply maximum pressure with pump.
- 6 - To check for piston seal leakage near end of stroke, back off punch 7/8 inch. Apply maximum pressure.

Observação:

Para os Vasadores Manuais, verificar no catálogo RIDGID página 52 - Seção Vasadores ou aqui no site no link [Produtos->Ferramentas Diversas->Vasadores](#).